

Nursery Sessions



Our Nursery session times:

9.00am – 11.30am

12.30pm – 3.00pm



Your child will attend
either a morning or an afternoon session.

Starting School

This is a big step for both children and parents – particularly if this is your first child! However, relax and try not to worry! Your child will be fine and there are a few things that you can do, to help him/her to feel more at ease about this new and exciting experience!

Talk to your child about Nursery and explain that it's a happy, safe place where he/she will come to play, laugh, learn and make lots of friends! Be positive about it and encourage him/her to look forward to coming! Discuss any concerns he/she may have and reassure him/her.

Visit the school and Early Years Class with your child – this gives you both the opportunity to meet the staff and have a look around. (An open day will be arranged and the date sent to you). Our Nursery and Reception classes are mixed together, so perhaps you can arrange for your child to meet with a child from this years current Nursery to chat with.

Try on his/her new school uniform and take a photograph for your child to show relatives and friends. Children love to show off new things and this gives him/her the opportunity to discuss Nursery with other people.



Arriving at School

Children can either be dropped off at our Breakfast Club, from 7.55am (Charges apply) or at the Nursery Door at 8.55am.

Staff will show him/her where to put his/her coat and help your child to recognise his/her locker. Some children will be upset initially when you leave especially if they are not used to being without you. Please try not to worry. Your child will be comforted and supported until he/she has settled down. If we feel it necessary we will phone you.

If you think your child may be anxious about you leaving, or you have any concerns, please discuss these with either the Class Teacher or Teaching Assistants. It is also a good idea to mention anything that has happened that may be worrying your child. If we know about a problem we are better able to reassure your child.



Snack Time

Snack time is an important part of our class routine. It is a social occasion and allows the children to sit down and chat over a drink of milk and a healthy snack! The children find this very enjoyable and learn good table manners and social skills from each other.

Our snacks include fruits, cheese & crackers, yoghurts and sandwiches. We do try our best to make the snacks varied and healthy! Water is always available to the children throughout the session.

There is a weekly charge of £1 towards the cost of this which is payable on a Monday. This should be placed in an envelope with your child's name on and handed in on a Monday morning. We regret that the Class Teacher cannot take responsibility for money not in a clearly labelled envelope.

If your child suffers from any food allergies or if he/she has special dietary requirements, it is vital that you discuss these with the class teacher as soon as possible.



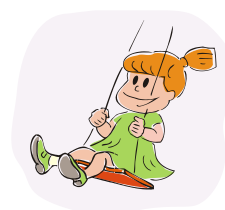
Playgroup Plus

Playgroup Plus is open every day from 11.30am to 3pm. Children who attend morning sessions are able to use this service and are collected by the staff at 11.30am and taken to the Playgroup Group Plus provision.

The sessions are supervised by qualified and experienced staff at a cost of £8 per session. This is payable in advance, on a Monday and the money should be placed in an envelope clearly labelled with your child's name and handed in to the class teacher. Parents who qualify for the Childcare in Wales Offer can use Playgroup Plus all week as part of their funded hours. Further information is available at <http://www.wrexham.gov.uk>

Morning spaces are limited for Nursery and are mainly for those parents who intend to use Playgroup Plus. Working parents take priority when we determine sessions, so it is essential that you receive your completed form stating your preference.

You must complete a registration form before your child can attend Playgroup Plus sessions.





The Early Years Learning Through Play

At Ysgol Heulfan we recognise the importance of play during the Early Years of a child's education. We have a well established Foundation Phase Department and by allowing the children to learn through play and by following a daily routine, we encourage the children to become independent, enthusiastic and confident learners.

Our Early Years class has been set up into different areas of learning which the children may choose to play in. Each area offers a wide range of learning experiences that are carefully planned out to encourage active learning to take place.

During each Nursery session your child will have free-play time, whole group time, small group time, and lots of adult interaction. We use a Plan-Do-Review system encouraging the children to take responsibility for their own learning. For further information, or indeed if you are interested in seeing this approach in action please speak to the Class teacher.

Our outdoor area is considered a vital part of our Classroom and the children will have access to this all through the session (whatever the weather!)



And Finally

We hope that your child will be very happy in our school. Starting school is a big step and we will do our very best to make the process as comfortable and stress-free as possible for all children (and parents too!!).

If you have any worries please arrange to come in to see us and we will do all we can to help you.

We look forward to seeing you in September!



**PLEASE REMEMBER THAT DUE TO THE
CORONAVIRUS PANDEMIC NURSERY SESSIONS
MAY RUN VERY DIFFERENTLY FROM
SEPTEMBER 2020. WE SUGGEST REGULARLY
CHECKING OUR WEBSITE FOR FURTHER
INFORMATION**

www.ysgolheulfan.co.uk

mailbox@heulfan-pri.wrexham.sch.uk

01978 722040